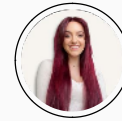


Bedrijfsgegevens



Shell IT
International B.V.

De recruiter



Melanie Vries
Source

Telefoon: +31614480066

E-mail: Melanie.devries@headfirst.nl

Segment Architecture

Functie	Segment Architecture
Locatie	Amsterdam
Uren per week	40 uren per week
Looptijd	14.02.2023 - 13.02.2025
Opdrachtnummer	129486
Sluitingstijd	13.02.2025

Rolomschrijving en taakafspraken

Het CV en de motivatie dienen aangeboden te worden in het Engels.

Het CV dient in een Word format aangeleverd te worden.

Cross Teams Integrated Power R&ES B2B EU is responsible for delivering architecture guidance, decision making and integral solution designs for all projects and DevOps initiatives that are deployed on the Integrated Power Platforms from a customer perspective and ensures a full and transparent handover to IDT and business when scaling out. These Customerplatforms and solutions need to be fit for purpose within the target portfolio, have technical integrity, the right business value and TCO (total cost of ownership, Cost2Serve) through its life cycle and a good fit with the IDT technology direction of Shell to facilitate a seamless handover to the target portfolio. The resulting roadmaps and high-level designs have a measurable impact on the effectiveness and profitability of Shell. The Segment Architect Integrated Power R&ES B2B EU ensures the solutions within the Integrated Power Portfolio have a coherent and high-quality architectural design across the various solution components (e.g. integration, storage, analytics, mobile,

etc.), enabling successful delivery of solutions deployed on the platforms and subsequent scale-out.

Responsibilities include:

1. Provide clear guidelines and inspiration for Integrated Power R&ES B2B EU to scalable solutions in the EU region. This includes the provision of solution architecture development, guidance, consultancy and assurance to digital projects and continuous improvement initiatives, making sure applications are well designed and conform to Shell standards, design handbook and reference/segment architectures.
2. Steering of a (virtual) team of Solution (data) Architects who are accountable to the Product Owner, Scrum Master and Technical Lead for the architecture of a solution being developed and implemented until the successful deployment of the solutions. Ensure portfolio alignment with other architects as well as portfolio owners.
3. This includes:
 - a. Being the point of call for all architecture aspects of the Integrated Power R&ES B2B EU initiatives in RDS.
 - b. Being able to address and integrate the full TOGAF cycle: Vision, Business architecture, Data architecture, and Application, Technical and Information Security aspects of an IT Solution, including options and scenarios and weighing of these to propose an underpinned architecture decision.
 - c. Ensure solution architecture is documented and conforms to standards or as needed emerging standards.
 - d. Coach detailed designers and business analysts in ongoing activities and projects during their design and delivery work.
 - e. Ensure support of and handover to IDE/IDSO etc and ongoing support that deviations of the design is managed and governed.
4. Follow business and digital IT Technology developments in the market and leverage this knowledge in architecting digital solutions in Shell.
5. Stay in touch with development of standards and standard services in business and IT at Shell. To ensure the latest service developments are taken into account.
6. Pro-actively contribute to the development of the Architecture community and be an ambassador for Architecture/APD. Interact with stakeholders on architecture issues and strategic improvements where such expertise is required.
7. Inspire business and IDT on the achieved results and the possibilities digital innovation provides, including how to apply (and when not).
8. Explicitly bring in new vendors and technologies as inspiration as well as potential future interesting technology/vendors to start interaction with. Ensure that designs are based on best practices and that we do not re-invent the wheel. Ensure and drive the re-use of components, APIs etc. This role is a specific form of Segment Arc

[Bekijk opdracht online](#)